



The Cubic is an adaptable, purpose-built solution for outdoor bicycle storage.

Our modular design provides a highly customisable, secure, steel clad cycle store capable of storing any number of bicycles.



Perforated profile steel



Product details

Product name	Cubic Perforated Profile
Product code	VEC133
Fixing	Surface mounted/root fixed
Capacity	Unlimited modular capacity
Bike racks	Any Turvec bike rack
Variations	Secure, Compact or Open
Compliance	EN-1090 CE Mark

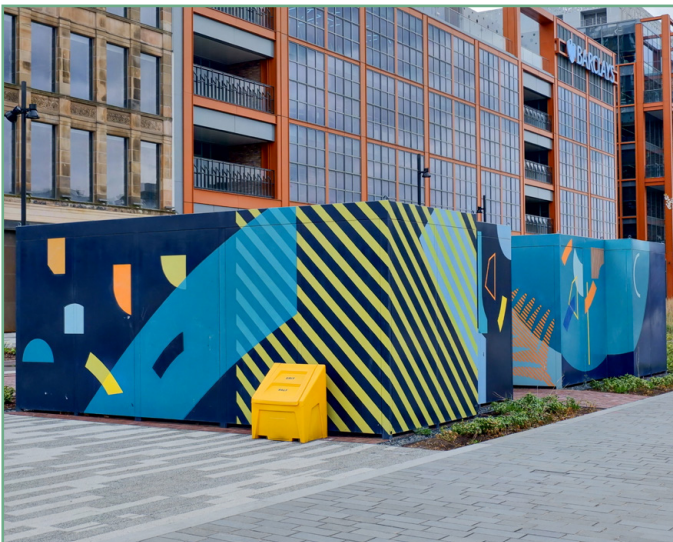
Profile plate steel



Product details

Product name	Cubic Profile Plate
Product code	VEC134
Fixing	Surface mounted/root fixed
Capacity	Unlimited modular capacity
Bike racks	Any Turvec bike rack
Variations	Secure, Compact or Open
Compliance	EN-1090 CE Mark

Bespoke steel plate



Product details

Product name	Cubic Bespoke Plate
Product code	VEC135
Fixing	Surface mounted/root fixed
Capacity	Unlimited modular capacity
Bike racks	Any Turvec bike rack
Variations	Secure, Compact or Open
Compliance	EN-1090 CE Mark

Standard finish

Frame	Hot-dip galvanised to BS EN ISO 1461:2009
Roof sheets	Profile powder coated
Drainage	Integrated within frame
Cladding	Perforated profile, Plate profile, or Bespoke plate steel
Gate	Wire mesh
Lock	Keyturn

Optional finishes

Frame	Powder coated
Lock	Keypad or strike plate
Roof	Green sedum roof
Lighting	LED lighting

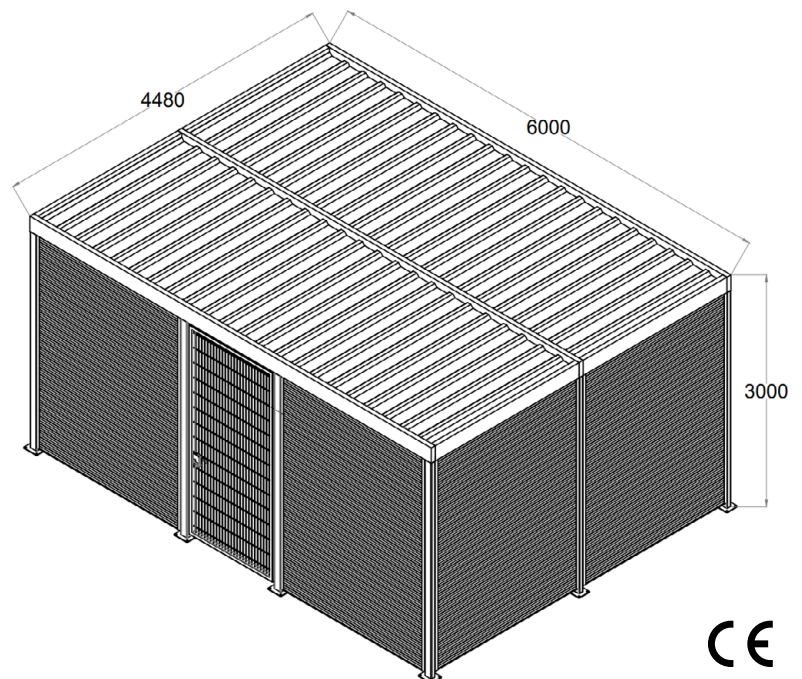
Dimensions

Standard module height	2400mm
Two-tier module height	3000mm
Width per module (double sided)	6000mm
Width per module (single sided)	4040mm
Depth per module	2210mm
Green sedum roof	+100mm height

Modular configuration

Our Cubic shelters are individually configurable. This means we can work within your required space.

Download CAD files online or simply get in touch with our team for assistance with your project.



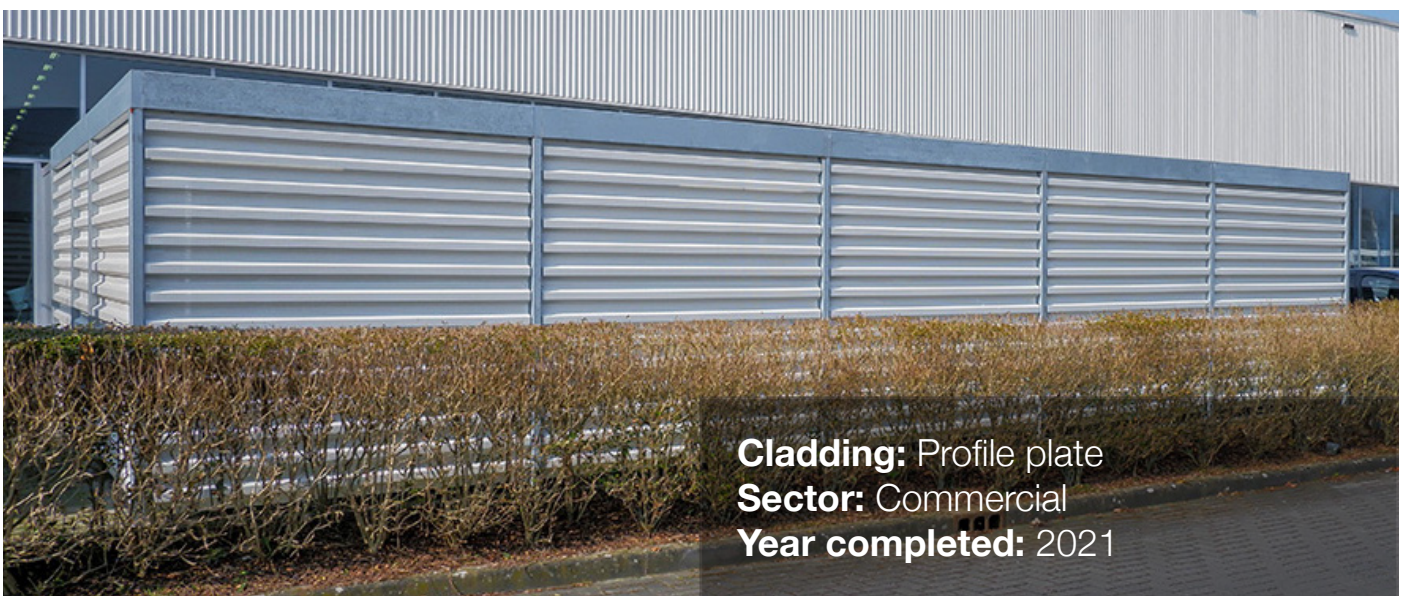
*Dimensions will vary per modular configuration



Cladding: Perforated profile
Sector: Residential
Year completed: 2020



Cladding: Bespoke plate
Sector: Commercial
Year completed: 2021



Cladding: Profile plate
Sector: Commercial
Year completed: 2021